

PRIME DAILY

June 26, 2025



U.S. stocks take a breather after a two-day surge.

U.S. equity markets **finished near the flatline** Wednesday, with markets taking a breather after gains on Monday and Tuesday that were energised by easing geopolitical tensions in the Middle East.

A report released by the Commerce Department showed a substantial pullback in new home sales in the U.S. in May, adding to signs of potentially softening housing market conditions following Tuesday's weaker-than-expected data on home prices.

Powell wrapped up two days of testifying before the House and the Senate, where he stressed to lawmakers the central bank is **"well-positioned"** to wait and see how Trump's tariffs are impacting the economy before reducing rates.

Powell's **"wait and see"** approach to interest rates has led Trump to consider announcing his pick to succeed the Fed chair in September or October. Powell's term ends in May 2026.

The move would raise questions about the potential erosion of the Fed's independence and potentially weaken its credibility. It could recalibrate rate expectations and trigger a reassessment of dollar positioning.

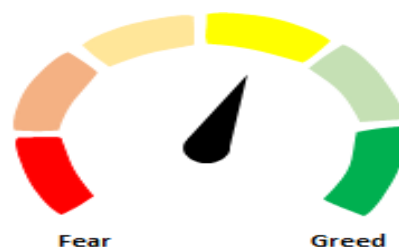
Oil prices inched higher, extending gains from the previous day as a larger-than-expected draw in U.S. crude stocks signalled firm demand, while investors remained cautious about the Iran-Israel ceasefire and stability in the Middle East.

Asian equities rose early Thursday, bolstered by Japanese stocks.

After opening 106 points higher, **Nifty held its bullish trend** and extended its rise throughout the session. The Nifty ended the session above the crucial resistance of 25,200, rising 200 points or 0.80% to close at 25,244, its highest level since October 3, 2024.

The Nifty appears to have **finally broken out** of the consolidation that had held for the last six weeks. Support is now shifted up to 25000, while on the upside, 25,500 could offer resistance.

Indian markets are set to **open higher on favourable** global cues, though today's monthly derivative expiry may add volatility to trading.



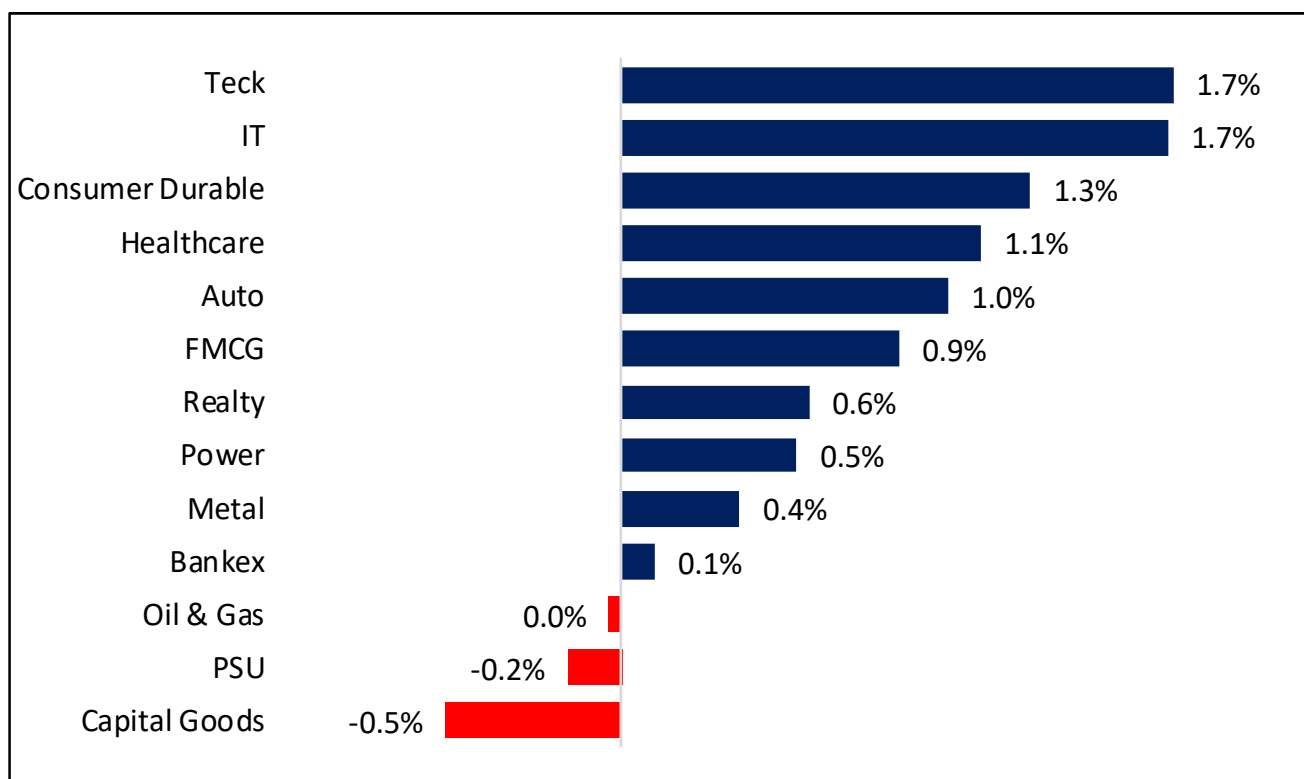
Global Equity Indices			
	Close	Abs. Change	% Change
Indian Indices			
Sensex	82,756	700.4 ▲	0.85%
Nifty	25,245	200.4 ▲	0.80%
Midcap	58,882	259.3 ▲	0.44%
Small cap	18,728	275.1 ▲	1.49%
US Indices			
Dow Jones	42,982	-106.6 ▼	-0.25%
S&P 500	6,092	0.0 ▼	0.00%
Nasdaq	19,974	61.0 ▲	0.31%
European Indices			
FTSE	8,719	-40.2 ▼	-0.46%
DAX	23,498	-143.3 ▼	-0.61%
CAC	7,558	-57.8 ▼	-0.76%
Asian Indices			
Shanghai	3,455	34.3 ▲	1.00%
Hang Seng	24,386	209.1 ▲	0.86%
Nikkei	39,350	559.3 ▲	1.44%
Indices Futures			
	Close	Abs. Change	% Change
IFSC Nifty			
IFSC Nifty	25,293	7.0 ▲	0.03%
US Indices			
Dow Jones	43,328	22.0 ▲	0.05%
S&P 500	6,150	3.0 ▲	0.05%
Nasdaq	22,481	19.5 ▲	0.09%
European Indices			
FTSE	8,721	-21.0 ▼	-0.24%
DAX	23,615	-19.0 ▼	-0.08%
Asian Indices			
Shanghai	3,912	-1.0 ▼	-0.03%
Hang Seng	24,359	-111.0 ▼	-0.45%
Nikkei	39,290	360.0 ▲	0.92%

Nifty50 Index Contributors

Top Five (Positive Contributors)		
Stock	Points	% Change
HDFCBANK	32.5	0.13
INFY	26.5	0.11
RELIANCE	24.7	0.10
BHARTIARTL	19.0	0.08
M&M	12.8	0.05

Bottom Five (Negative Contributors)		
Stock	Points	% Change
BEL	-9.9	-0.04
KOTAKBANK	-8.2	-0.03
AXISBANK	-5.0	-0.02
ONGC	-1.7	-0.01
EICHERMOT	-1.6	-0.01

BSE Sectoral Leaders & Laggards

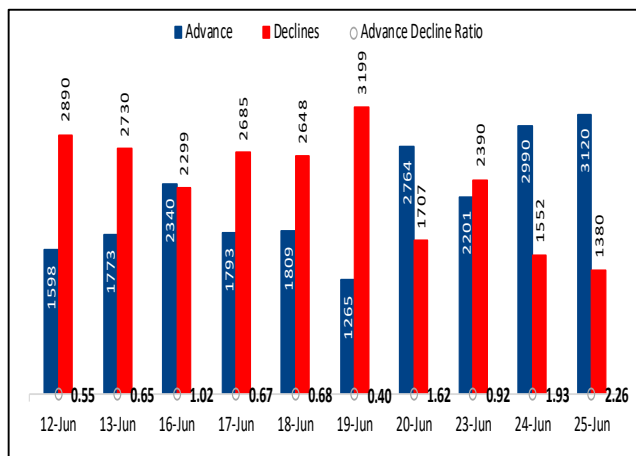


Nifty50 Index Top Pops & Drops

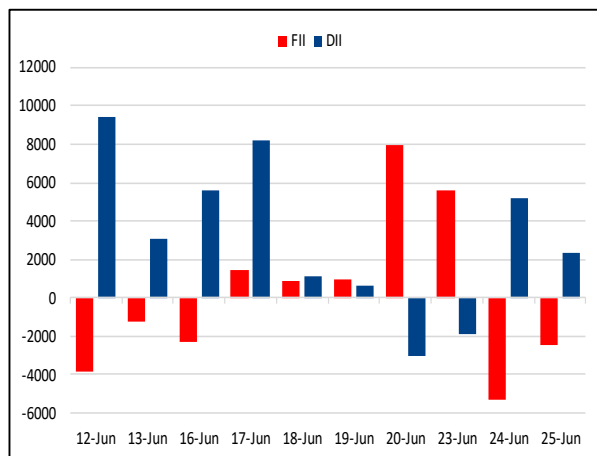
Nifty50 Top Five Gainers			
Symbol	LTP	% Change	Volume
TITAN	3,652.2	3.58	2,697,912
INFY	1,614.9	2.11	7,813,533
M&M	3,215.5	2.08	2,078,771
GRASIM	2,831.8	1.83	948,185
JSWSTEEL	1,024.5	1.73	2,029,126

Nifty50 Top Five Losers			
Symbol	LTP	% Change	Volume
BEL	406.1	-2.97	29,028,317
KOTAKBANK	2,198.3	-1.14	3,575,429
EICHERMOT	5,576.0	-0.94	449,222
ONGC	241.9	-0.82	13,056,178
AXISBANK	1,213.3	-0.65	4,229,259

BSE Advance & Declines



Institutional Activities



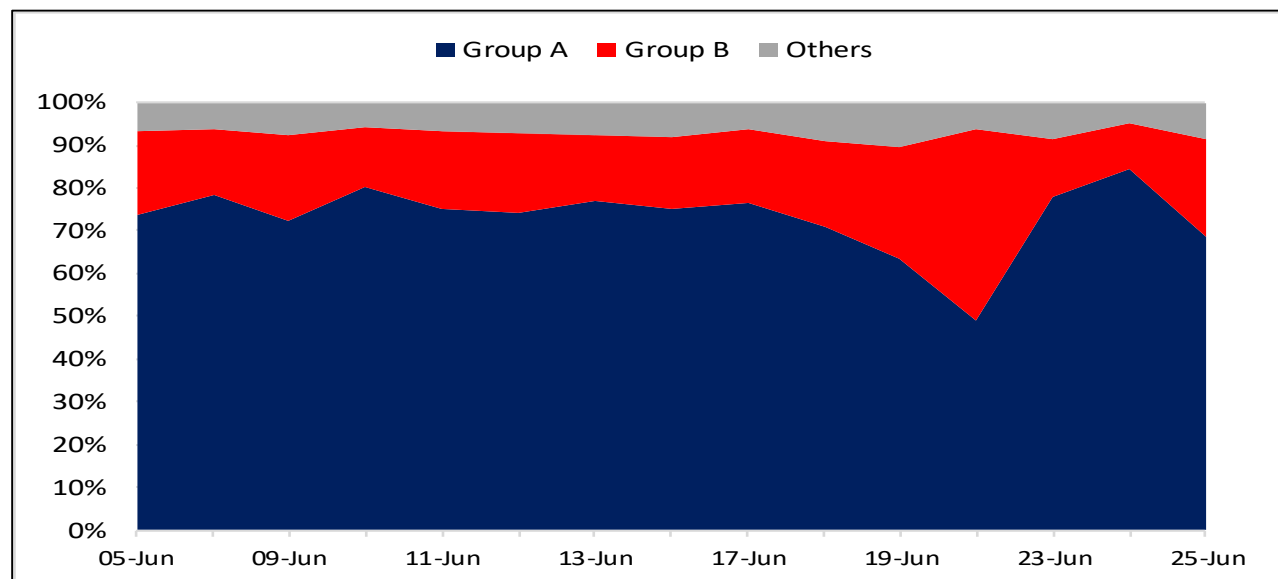
52 Week High Stocks

	25-Jun-25	24-Jun-25
BSE Universe	140	164
BSE Group A Stocks Hitting 52 Week High		
Stocks	Price	52 Week High
HOMEFIRST	1385.8	1390.1
EIDPARRY	1054.3	1064.1
MFSL	1626.8	1630.8
AUBANK	807.4	811.0
ITDCM	864.5	873.0




52 Week Low Stocks

	25-Jun-25	24-Jun-25
BSE Universe	56	55
BSE Group A Stocks Hitting 52 Week Low		
Stocks	Price	52 Week Low
PROTEAN	860.9	858.8

BSE Cash Market Turnover Participant-wise



News Highly Sensitive to Stock Price

Impact	Stock	News
	Star Health and allied Insurance	WF Asian Smaller Companies Fund Limited sold 1.67 crore shares or 2.85% at Rs 420.03 apiece, while SBI Mutual Fund bought 1.64 crore shares or 2.8% at Rs 420 apiece.
	Texmaco Rail	Texmaco Rail And Engineering Ltd. received an order worth US\$ 62.2 million (Rs 535 crore) from Cameroon-based Camalco SA, for the manufacture and supply of wagons, with an initial order for 560 open top wagons. This is to be completed in two phases within 24 months from its purchase order date.
	Exicom Tele-Systems	Board approved fund raise up to Rs 260 crore through rights issue. It will fix price, entitlement ratio on July 01, 2025. Additionally, Board approved the conversion of an unsecured loan of approximately Rs 283.2 crore, including accrued interest, into equity shares of its wholly owned subsidiary, Exicom Power Solutions B.V., Netherlands. The move is intended to reduce interest outflows, ease working capital pressure, and enhance liquidity at the subsidiary, which operates in the EV sector.

Stock	News
Coal India	Coal India Limited saw a dip in coking coal production in May. The production fell by 8.7 percent. This happened even as the government aims to increase domestic coking coal production. The goal is to reach 140 million tonnes by 2030. The government wants to reduce reliance on imports for the steel sector.
LTTS	L&T Technology Services Limited (LTTS) has secured an exclusive five-year agreement of over US\$ 50 million by a major global energy company. LTTS will serve as enterprise rate and digital services provider across the client's international affiliates.
Reliance Inds	Adani Total Gas Ltd and Reliance Industries Ltd arm Jio-bp have partnered to sell auto fuel across select outlets. Select ATGL outlets will sell Jio-bp's petrol and diesel, and the Jio-bp outlets will integrate ATGL's compressed natural gas (CNG) dispensing units
Vodafone Idea Ltd	Vodafone Idea Ltd. is talking to lenders to borrow about 250 billion rupees (\$2.9 billion) in loans to bolster its network and compete better with large rivals.
CEAT	CEAT plans to raise up to Rs 500 crore through the issuance of unsecured NCDs on a private placement basis. It also plans to infuse up to Rs 400 crore (equivalent in Sri Lankan rupees) into its wholly owned subsidiary, CEAT OHT Lanka, in one or more tranches through equity and/or preference shares.
SMS Pharma	Company said that this was the second successful completion of the United States Food and Drug Administration (US FDA) inspection at Central Laboratory Analytical Services, located at, Gagillapur, Medchal Malkajgiri District, Hyderabad, Telangana. The inspection, conducted from 23rd June 2025 to 25th June 2025, concluded with zero Form 483 observations.
Western Carriers	Company received order worth Rs 558 crore from Jindal Stainless. It is for a period of 36 months.
Panorama Studios	Panorama Studios Inflight LLP, a subsidiary of Panorama Studios International Limited has executed an Assignment Agreement with Arha Media and Broadcasting Private Limited for granting exclusive license of Airborne Rights of 4 Telugu Films for 3 years.
Balaji Amines	The company received consent to operate the manufacture of ISO PROPYL AMINE. Trial runs will start and commencement of commercial Production would take effect shortly.
Can Fin Homes	The company approved to raise up to Rs 10,000 crore via debt and Rs 1,000 crore via QIP.

Key Events

New Home Sales dip below forecast and previous month's numbers, signaling a slowdown

The U.S. housing market witnessed a decline in New Home Sales, a key economic indicator that measures the annualized number of new single-family homes sold during the previous month. The recent data shows a significant drop to 623K, causing concern among industry experts and economists.

US Building Permits Stabilize, Meeting Forecast Expectations

The US Building Permits report, a key economic indicator closely scrutinized by economists and investors, has shown a stabilization in the recent data release. The actual number came in at a decrease of -2.0%, which was precisely in line with the forecasted figure.

German exporters' mood worsens amid U.S. tariff uncertainty

German exporters showed a more pessimistic outlook in June as uncertainty over potential U.S. tariffs continued to weigh on sentiment.

Bank of Thailand keeps interest rate at 1.75%

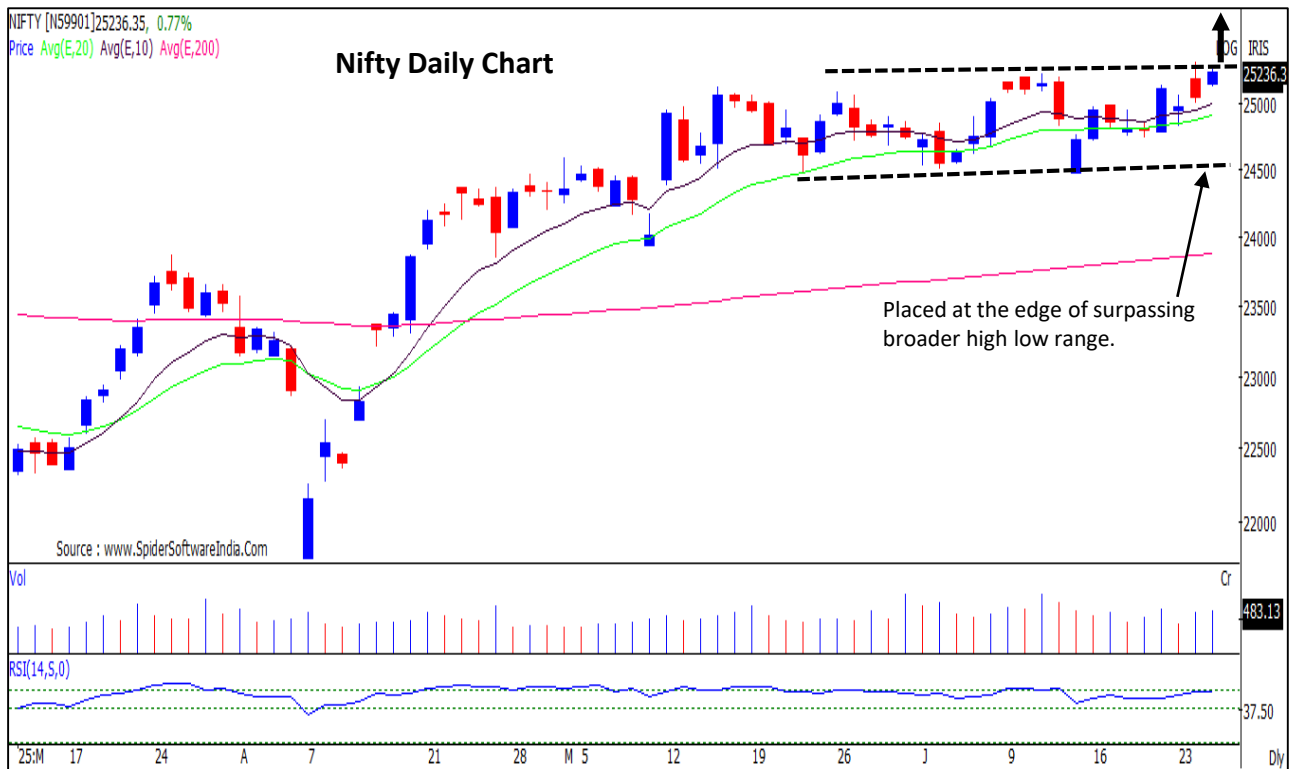
The Bank of Thailand's monetary policy committee voted to maintain its policy rate at 1.75% on Wednesday, with six members supporting the decision and one voting for a cut.

EIA crude oil inventories decline, but less than anticipated

In its latest report, the Energy Information Administration (EIA) revealed that the number of barrels of commercial crude oil held by US firms has declined. The actual decrease was measured at 5.836 million barrels, a significant drop but not as steep as forecasted.

Nifty : Bulls on the way towards crucial range breakout.

A decisive up move could open next upside towards 25600-25700 levels.



Nifty IT : Preparing to move up after the consolidation. One may expect buzz in frontline and midcap IT stocks ahead.

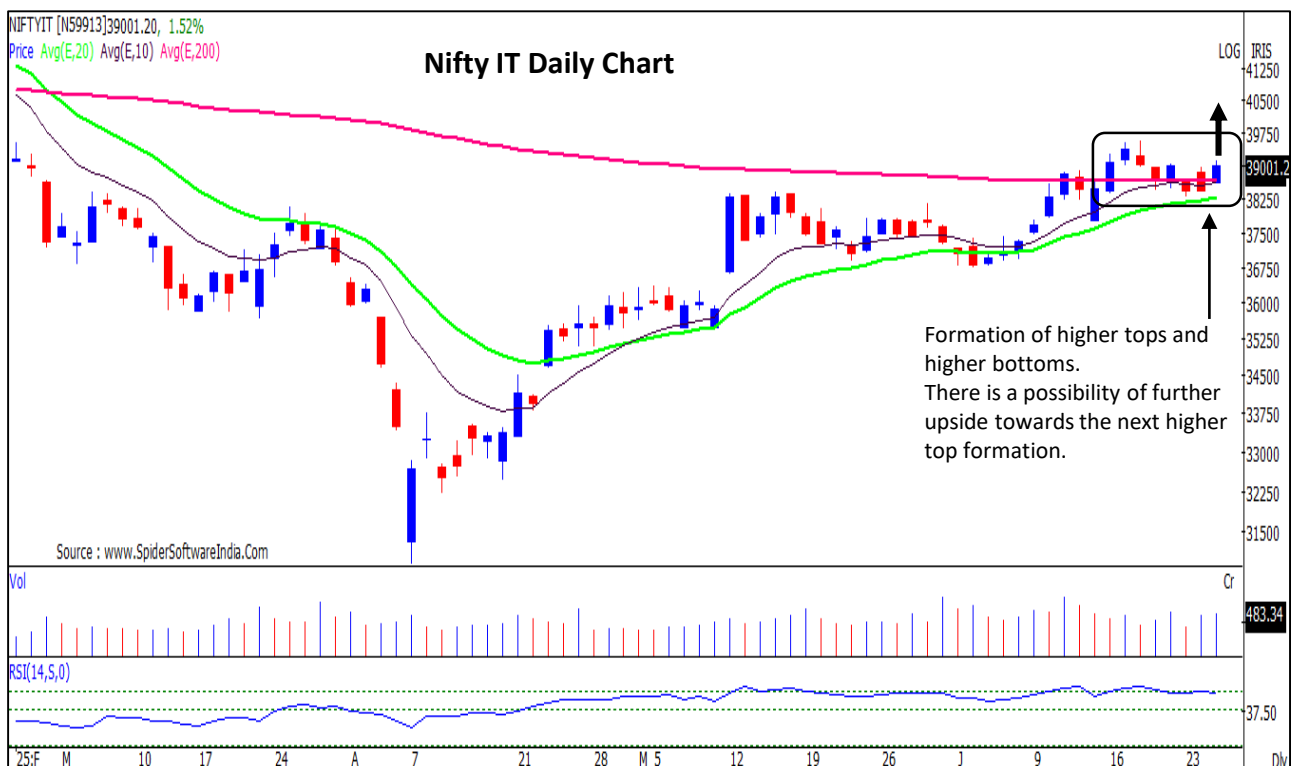
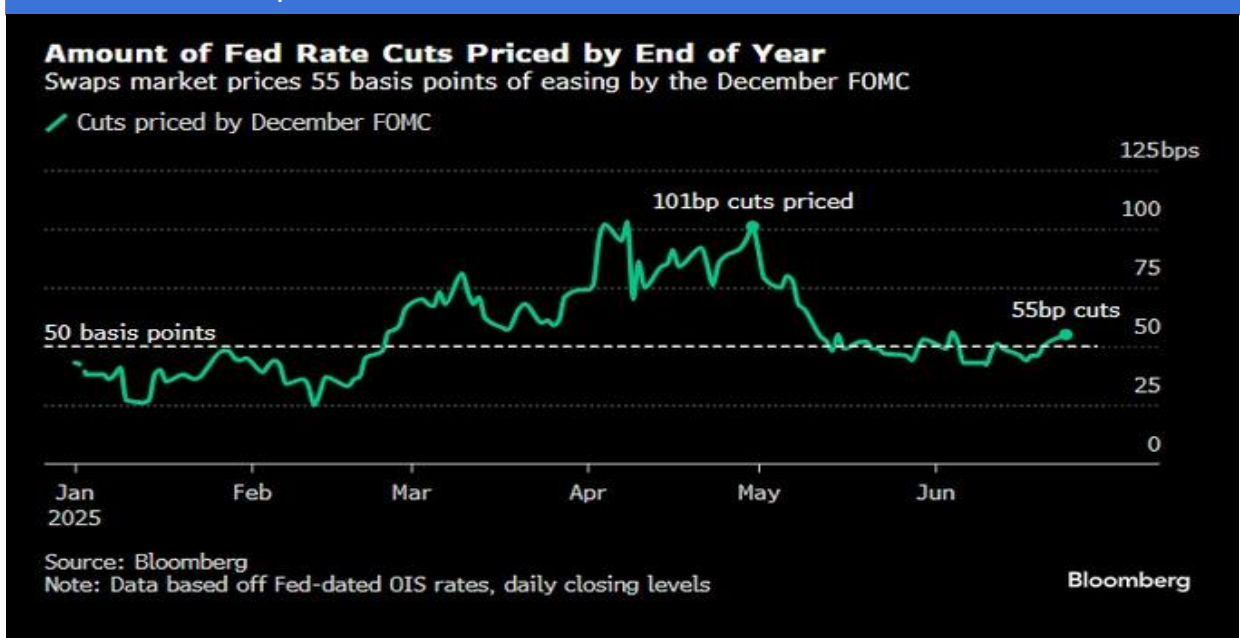


Chart With Interesting Observations

Market is Pricing in Two Cuts from the FOMC

- Traders are pricing in about 55 basis points easing versus 47 basis points of easing in previous week, which implies expectations for nearly two reductions in the remainder of 2025. The first is fully priced in for October, though some see a move as soon as September. The Fed has held rates steady since December at 4.25%-4.5%.

Fed Rate Cuts Expectations



Source: Bloomberg; HSL Prime Research

F&O Highlights

LONG BUILDUP UP WAS SEEN IN NIFTY & BANKNIFTY FUTURES

Create Longs with the SL of 25150 Levels.

- The Nifty opened 106 points higher and closed 200 points (0.80%) at 25,244, its highest level since October 3, 2024, surpassing the 25,200 resistance.
- Long Build-Up was seen in the Nifty Futures where Open Interest rose by 1.05% with Nifty rising by 0.80%. Nifty's futures rollover stands higher at 71%, as against the last three series' average rollover of 63%.
- Long Build-Up was seen in the Bank Nifty Futures where Open Interest rose by 9.19% with Bank Nifty rising by 0.28%. We have seen a rollover of 63% in Bank Nifty futures, which is in line with the last three series' average rollover of 63%.
- Nifty Open Interest Put Call ratio rose to 1.13 levels from 0.85 levels.
- Amongst the Nifty options (26-June Expiry), Call writing is seen at 25300-25400 levels, indicating Nifty is likely to find strong resistance in the vicinity of 25300-25400 levels. On the lower side, an immediate support is placed in the vicinity of 25200-25100 levels where we have seen Put writing.
- Short covering was seen by FII's' in the Index Futures segment where they net bought worth 528 cr with their Open Interest going down by 1981 contracts.

Index	Expected Trend	Prev. Close	Buy/Sell	Stop Loss	Target
NIFTY FUT	UP	25252.20	BUY	25150	25350
BANK NIFTY FUT	UP	56619.20	BUY	56300	57000

Nifty50 Snapshot			
	25-June-25	24-June-25	% Chg.
Nifty Spot	25244.75	25044.35	0.80
Nifty Futures	25252.20	25071.70	0.72
Premium/ (Discount)	7.45	27.35	N.A.
Open Interest (OI)	1.97	1.95	1.05
Nifty PCR	1.13	0.85	32.88

Bank Nifty Snapshot			
	25-June-25	24-June-25	% Chg.
Bank Nifty Spot	56621.15	56461.90	0.28
Bank Nifty Futures	56619.20	56500.80	0.21
Premium/ (Discount)	-1.95	38.90	N.A.
Open Interest (OI)	0.24	0.22	9.19
Bank Nifty PCR	0.99	0.92	7.81

Nifty Options Highest OI (Monthly)			
CALL		PUT	
Strike Price	Open Interest (Contracts)	Strike Price	Open Interest (Contracts)
26000	176136	25200	199111

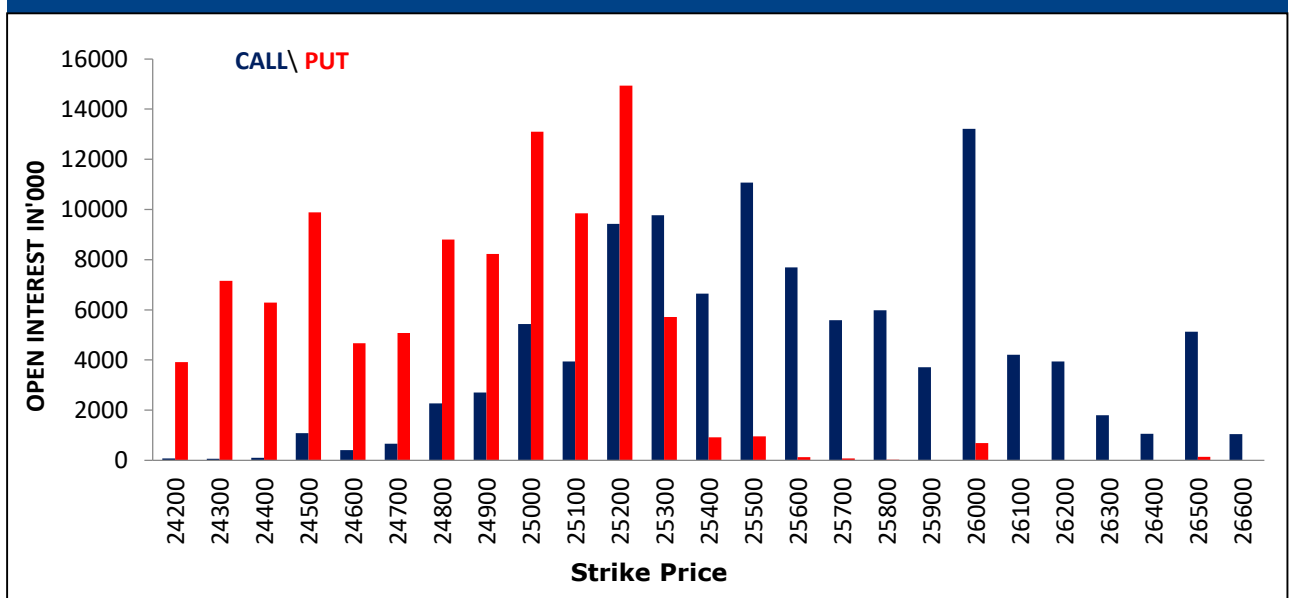
FII Activity On 25 June 2025

	BUY		SELL		NET	OPEN INTEREST	
	Contracts	Value (Rs Cr)	Contracts	Value (Rs Cr)	(Rs Cr)	Contracts	Value (Rs Cr)
Index Futures	37186	6914	34585	6385	528	199772	37570
Nifty Futures	21869	4151	20102	3813	338	151269	28725
Bank Nifty Fut.	9169	1708	8462	1549	159	24754	4541
Index Options	9898263	1816975	9770503	1795882	21093	2713455	504302
Nifty Options	8199679	1530087	8098645	1513627	16460	2178331	412436
Bank Nifty Opt.	1351180	229853	1326355	225544	4309	455509	78923
Stock Futures	1557341	107917	1516748	103794	4123	5837623	408920
Stock Options	1283329	89660	1301329	91295	-1635	1828481	120892

FII's Open Interest (Contracts)

Date	Index Futures	Nifty Futures	Bank nifty Futures	Index Options	Nifty Options	Bank Nifty Options	Stock Futures	Stock Options
25-June-25	199772	151269	24754	2713455	2178331	455509	5837623	1828481
24-June-25	201753	152794	24435	2474123	1901246	497044	5906114	1830225
Net Contracts	-1981	-1525	319	239332	277085	-41535	-68491	-1744

Nifty Monthly (26- June) Option Open Interest Distribution



Top Gainers OI Wise		
Company	Future OI (%)	Price (%)
BSOFT	22	5
MCX	20	5
PNBHOUSING	12	2
DLF	11	1
RVNL	10	0

Top Losers OI Wise		
Company	Future OI (%)	Price (%)
UPL	-15	1
SHREECEM	-14	2
PETRONET	-9	-1
TITAGARH	-9	0
DELHIVERY	-9	3

Top Gainers Price Wise		
Company	Future OI (%)	Price (%)
MCX	20	5
BSOFT	22	5
PAGEIND	-1	4
HFCL	-2	4
IDEA	-2	4

Top Losers Price Wise		
Company	Future OI (%)	Price (%)
ANGELONE	6	-3
BEL	0	-3
MAZDOCK	6	-3
DIXON	9	-2
BDL	4	-2

Long Buildup		
Company	Future OI (%)	Price (%)
BSOFT	22	5
MCX	20	5
PNBHOUSING	12	2
DLF	11	1
RVNL	10	0

Short Buildup		
Company	Future OI (%)	Price (%)
DIXON	9	-2
RBLBANK	9	0
CYIENT	8	-1
ANGELONE	6	-3
MAZDOCK	6	-3

Long Unwinding		
Company	Future OI (%)	Price (%)
PETRONET	-9	-1
POONAWALLA	-8	-1
SOLARINDS	-5	-1
SAIL	-4	-2
COLPAL	-3	0

Short Covering		
Company	Future OI (%)	Price (%)
UPL	-15	1
SHREECEM	-14	2
TITAGARH	-9	0
DELHIVERY	-9	3
ICICIGI	-8	1

Securities In Ban For Trade – 26.06.2025	
No.	Company Name
1.	BSOFT
2.	MCX
3.	TITAGARH

Economic Calendar

Thursday	Friday	Monday	Tuesday	Wednesday
26 Jun	27 Jun	30 Jun	01 Jul	02 Jul
US: Building Permits, GDP, Personal Consumption, Durable Goods Orders, Pending Homes Sales, Initial & Conti. Jobless Claims	China: Industrial Profit UK: GDP, Current Account Balance EU: Consumer Confidence US: Personal Income & Spending, Core PCE	Japan: IIP China : PMI UK: GDP, Current Account India: IIP, Fiscal Balance	Japan, China, India, UK, EU, US: Mfg. PMI EU: CPI US: ISM Mfg., Construction spending, JOLTS Job Openings	EU: Unemployment Rate, US: MBA Mortgage, Challenger Job cuts, ADP Employment Change

Open Derivatives Trading Calls

NO	RECO DT	RECO	COMPANY NAME	BUY RANGE	CMP	SL	TARGET	UPSIDE %	VALID TILL
1	6-JUN-25	BUY	IDFC FIRST BANK JULY FUT	69-71.40	72.6	67.0	80	10.3	31-JUL-25
2	9-JUN-25	BUY	FEDERAL BANK JUN FUT	212.37-207	210.1	203.0	223	6.1	26-JUN-25
3	20-JUN-25	BUY	ICICIGI JULY FUT	1940-1975.10	2,020.0	1,922.0	2173	7.6	31-JUL-25
4	24-JUN-25	BUY	SAIL JULY FUT	132.40-129.60	129.3	128.3	140	8.3	8-JUL-25
5	24-JUN-25	BUY	SBI AUG FUT	803-816	810.2	795.0	900	11.1	28-AUG-25

Open Short-Term MTF Calls

NO.	RECO DT.	RECO	COMPANY NAME	BUY RANGE	CMP	Lower Band	SL	TARGET	UPSIDE %	VALID TILL
1	12-JUN-25	BUY	BAJAJ FINSERVE	2030-2040	2,011.8	1,980.0	1,945.0	2,130.0	5.9	3-JUL-25
2	20-JUN-25	BUY	M&M	3170-3200	3,215.5	3,110.0	3,059.0	3,335.0	3.7	11-JUL-25
3	20-JUN-25	BUY	DMART	4225-4270	4,276.4	4,146.0	4,079.0	4,440.0	3.8	11-JUL-25
4	23-JUN-25	BUY	RELIANCE INDS	1450-1459	1,467.3	1,422.0	1,405.0	1,510.0	2.9	14-JUL-25
5	24-JUN-25	BUY	TATA STEEL	156.25-155.55	156.4	151.7	148.5	165.0	5.5	15-JUL-25
6	25-JUN-25	BUY	JUBILANR PHARMA	1160-1174	1,183.9	1,118.0	1,103.0	1,244.0	5.1	9-JUL-25

Open Positional MTF Calls

NO.	RECO DT.	RECO	COMPANY NAME	BUY RANGE	CMP	SL	TARGET 1	TARGET 2	UPSIDE %	VALID TILL
1	12-MAY-25	BUY	BANKBEES	565.86-548	581.1	537.0	599.0	630.0	8	11-JUL-25
2	26-MAY-25	BUY	CROMPTON GREAVES	355.35-339	354.9	333.0	380.0	391.0	10	10-JUL-25
3	26-MAY-25	BUY	CONSUMEETF	118.81-115.80	120.8	114.0	124.5	127.0	5	24-AUG-25
4	2-JUN-25	BUY	INDIAN BANK	633.30-612	620.7	594.0	680.0	705.0	14	17-JUL-25
5	4-JUN-25	BUY	MACROTECH DEVELOPERS	1446.50-1340	1,456.6	1300.0	1621.0	1680.0	15	3-AUG-25
6	5-JUN-25	BUY	SWIGGY	364.80-333	400.0	321.0	421.0	445.0	11	4-AUG-25
7	9-JUN-25	BUY	JSW INFRA	310-287	311.9	279.0	335.0	350.0	12	24-JUL-25
8	9-JUN-25	BUY	AUTOETF	24.45-23.79	24.3	23.5	25.1	25.7	6	7-SEP-25
9	10-JUN-25	BUY	ITBEES	41.90-42.10	42.4	40.2	44.0	46.0	8	8-SEP-25
10	11-JUN-25	BUY	VRL LOGISTICS	572-584	566.5	529.0	620.0	650.0	15	26-JUL-25
11	24-JUN-25	BUY	USHA MART	323-317.05	336.3	292.0	349.0	375.0	12	23-AUG-25
12	25-JUN-25	BUY	JUBILANT FOOD	716-708.50	713.0	665.0	765.0	815.0	14	9-AUG-25

Open Muhurat Trading MTF Picks

NO.	RECO DT.	RECO	COMPANY NAME	BUY RANGE	CMP	SL	TARGET 1	TARGET 2	UPSIDE %	VALID TILL
1	28-OCT-24	BUY	KARUR VYSYA BANK*	214-218	248.6	183.0	249.0	269.0	8	NEXT DIWALI

*= 1st Target Achieved

NSE 200 SUPPORT & RESISTANCE

SYMBOL	CLOSE	R2	R1	PIVOT	S1	S2	5 DMA	20 DMA	% Delivery	Trend
ABB	5966.5	6114.8	6040.7	5990.8	5916.7	5866.8	5946.2	6020.6	44.7	Bearish
ABCAPITAL	272.3	276.7	274.5	270.9	268.7	265.0	264.8	243.5	36.3	Bullish
ABFRL	74.8	75.7	75.3	74.7	74.3	73.8	73.9	77.6	46.0	Bearish
ACC	1854.2	1870.6	1862.4	1856.2	1848.0	1841.8	1833.6	1870.4	61.6	Bearish
AMBUJACEM	559.4	566.5	563.0	557.1	553.6	547.7	543.1	550.8	54.2	Bearish
ADANIPOWER	557.0	565.2	561.1	554.9	550.8	544.7	541.7	555.4	41.2	Bearish
ADANIENSOL	850.2	870.3	860.3	853.7	843.6	837.0	838.2	865.7	55.1	Bearish
ADANIGREEN	981.1	1003.4	992.2	985.9	974.7	968.4	962.1	997.9	35.3	Bearish
ADANIENT	2527.2	2556.5	2541.8	2527.0	2512.3	2497.5	2474.8	2513.6	49.8	Bearish
ADANIPORTS	1393.1	1412.7	1402.9	1394.2	1384.4	1375.7	1364.9	1418.7	49.6	Bearish
ASHOKLEY	244.6	247.3	246.0	243.8	242.5	240.3	238.0	237.5	58.5	Bullish
ALKEM	4854.0	4888.0	4871.0	4846.0	4829.0	4804.0	4796.1	4897.0	66.4	Bearish
APLAPOLLO	1795.9	1822.0	1808.9	1799.5	1786.4	1777.0	1784.6	1837.3	70.6	Bearish
APOLLOHOSP	7042.0	7098.7	7070.3	7032.7	7004.3	6966.7	7025.7	6957.8	73.5	Bullish
ASIANPAINT	2279.9	2302.1	2291.0	2283.2	2272.1	2264.3	2274.6	2254.3	64.6	Bullish
APOLLTYRE	451.1	457.3	454.2	449.2	446.1	441.1	445.6	457.8	57.0	Bearish
AUROPHARMA	1120.2	1131.7	1125.9	1116.4	1110.6	1101.1	1100.8	1136.2	37.8	Bearish
ASTRAL	1505.4	1529.0	1517.2	1508.2	1496.4	1487.4	1516.6	1522.2	37.1	Bearish
ATGL	634.2	643.9	639.0	635.9	631.0	627.8	627.1	665.2	39.8	Bearish
AUBANK	807.1	820.7	813.9	804.1	797.2	787.4	798.0	761.5	49.5	Bullish
AXISBANK	1213.3	1232.2	1222.7	1216.9	1207.4	1201.6	1217.4	1206.8	77.9	Bullish
BAJFINANCE	928.0	938.7	933.3	924.7	919.3	910.7	913.1	922.3	56.1	Bearish
BAJAJHFL	121.7	123.5	122.6	122.0	121.1	120.5	119.8	122.3	47.1	Bearish
BANDHANBNK	182.0	184.9	183.4	181.6	180.2	178.4	180.1	176.5	42.7	Bullish
BDL	1814.9	1891.0	1852.9	1826.5	1788.4	1762.0	1876.8	1922.7	27.9	Bearish
BHARTIARTL	1965.6	1989.9	1977.7	1957.9	1945.7	1925.9	1929.8	1876.9	69.4	Bullish
BHARTIHEXA	1869.2	1917.9	1893.5	1866.6	1842.2	1815.3	1817.7	1810.5	44.8	Bullish
BEL	406.1	425.9	416.0	410.5	400.6	395.1	410.5	397.1	47.7	Bullish
BHEL	261.9	266.3	264.1	262.1	259.9	257.9	254.7	255.8	39.9	Bearish
BHARATFORG	1275.1	1319.4	1297.3	1283.9	1261.8	1248.4	1284.3	1291.7	52.8	Bearish
BIOCON	351.4	362.4	356.9	350.0	344.5	337.6	350.6	344.3	62.0	Bullish
BAJAJ-AUTO	8389.5	8465.2	8427.3	8399.2	8361.3	8333.2	8384.0	8537.2	59.6	Bearish
BAJAJFINSV	2011.8	2038.6	2025.2	2014.6	2001.2	1990.6	1994.5	1999.6	46.5	Bearish
BAJAJHLDNG	13721.0	14069.7	13895.3	13743.7	13569.3	13417.7	13606.6	13755.8	46.3	Bearish
BANKBARODA	239.1	242.3	240.7	239.3	237.7	236.4	235.3	243.1	41.5	Bearish
BANKINDIA	116.2	117.4	116.8	116.0	115.4	114.6	114.9	121.2	52.1	Bearish
MAHABANK	54.3	55.3	54.8	54.5	54.0	53.7	54.0	54.9	42.6	Bearish
BOSCHLTD	31755.0	32385.0	32070.0	31770.0	31455.0	31155.0	31899.0	31716.8	47.8	Bullish
BPCL	319.6	326.1	322.9	319.7	316.5	313.3	315.9	316.6	55.7	Bearish
BRITANNIA	5708.0	5808.3	5758.2	5684.3	5634.2	5560.3	5607.9	5591.5	58.1	Bullish
BSE	2789.0	2848.3	2818.6	2795.4	2765.7	2742.5	2726.7	2760.6	27.3	Bearish
CANBK	110.7	112.0	111.4	110.9	110.2	109.7	108.3	112.9	60.7	Bearish
CONCOR	756.2	765.9	761.0	754.2	749.3	742.5	740.6	772.1	51.1	Bearish
CGPOWER	676.6	695.2	685.9	678.5	669.2	661.8	679.5	684.8	45.8	Bearish
CHOLAFIN	1608.8	1628.6	1618.7	1603.4	1593.5	1578.2	1578.6	1580.1	71.1	Bearish
CIPLA	1510.0	1527.3	1518.7	1509.3	1500.7	1491.3	1499.0	1496.1	54.1	Bullish
COLPAL	2419.8	2461.9	2440.9	2427.9	2406.9	2393.9	2411.3	2429.6	49.3	Bearish
COALINDIA	391.8	397.1	394.4	392.7	390.0	388.3	390.0	394.5	57.7	Bearish
COCHINSHIP	2134.0	2218.7	2176.3	2143.7	2101.3	2068.7	2159.1	2153.9	20.9	Bearish
COFORGE	1880.0	1911.3	1895.7	1879.3	1863.7	1847.3	1839.8	1792.0	42.1	Bullish

NSE 200 SUPPORT & RESISTANCE

SYMBOL	CLOSE	R2	R1	PIVOT	S1	S2	5 DMA	20 DMA	% Delivery	Trend
DABUR	480.3	485.2	482.7	479.0	476.6	472.9	471.0	478.3	72.4	Bearish
DIVISLAB	6586.5	6658.8	6622.7	6571.3	6535.2	6483.8	6574.6	6608.5	63.3	Bearish
DIXON	14165.0	14799.0	14482.0	14268.0	13951.0	13737.0	14258.6	14540.1	37.8	Bearish
DLF	854.4	862.2	858.3	851.7	847.8	841.3	850.1	841.8	44.5	Bullish
DMART	4276.4	4326.3	4301.4	4269.0	4244.1	4211.7	4273.2	4137.9	60.3	Bullish
DRREDDY	1341.6	1354.3	1347.9	1342.0	1335.6	1329.7	1329.6	1311.5	57.1	Bullish
EICHERMOT	5576.0	5683.7	5629.8	5598.7	5544.8	5513.7	5555.2	5404.0	67.4	Bullish
ESCORTS	3304.6	3400.3	3352.5	3323.7	3275.9	3247.1	3281.6	3259.2	39.2	Bullish
ETERNAL	258.9	262.1	260.5	257.8	256.2	253.5	254.3	250.0	51.8	Bullish
EXIDEIND	385.8	393.1	389.5	386.8	383.2	380.5	380.7	388.1	65.4	Bearish
FEDERALBNK	210.4	212.8	211.6	210.4	209.2	208.1	207.6	207.3	61.2	Bullish
GAIL	184.0	188.8	186.4	185.0	182.6	181.2	183.3	189.7	53.7	Bearish
GODREJCP	1185.3	1200.4	1192.8	1181.7	1174.1	1163.0	1182.7	1208.8	74.8	Bearish
GMRAIRPORT	83.6	84.3	83.9	83.4	83.1	82.6	81.9	83.7	63.2	Bearish
GLENMARK	1717.1	1757.4	1737.3	1708.8	1688.7	1660.2	1672.2	1604.0	42.6	Bullish
GODREJPROP	2403.3	2440.8	2422.1	2401.2	2382.5	2361.6	2403.0	2381.1	46.6	Bullish
GRASIM	2831.8	2876.9	2854.4	2820.4	2797.9	2763.9	2748.4	2653.0	62.5	Bullish
HAVELLS	1569.3	1610.7	1590.0	1578.3	1557.6	1545.9	1551.5	1538.6	56.6	Bullish
HCLTECH	1717.1	1732.6	1724.9	1712.9	1705.2	1693.2	1713.2	1681.4	58.5	Bullish
HDFCAMC	5092.3	5153.0	5122.6	5093.7	5063.3	5034.4	4986.1	4962.1	52.6	Bullish
HDFCBANK	1980.2	1993.5	1986.8	1975.4	1968.7	1957.3	1957.9	1947.1	74.2	Bullish
HDFCLIFE	785.1	792.9	789.0	783.8	779.9	774.7	776.0	767.1	72.2	Bullish
HEROMOTOCO	4300.8	4384.1	4342.5	4316.2	4274.6	4248.3	4313.8	4312.6	41.3	Bearish
HAL	4792.7	4940.9	4866.8	4825.9	4751.8	4710.9	4916.6	4991.6	40.4	Bearish
HINDALCO	672.7	681.2	676.9	672.7	668.4	664.2	658.8	647.9	47.2	Bullish
HINDPETRO	408.2	415.1	411.6	408.3	404.9	401.6	398.0	401.5	52.7	Bearish
HUDCO	239.6	245.1	242.4	237.7	235.0	230.3	230.0	236.4	32.3	Bearish
HINDUNILVR	2278.7	2299.3	2289.0	2280.2	2269.9	2261.1	2283.5	2337.8	67.9	Bearish
HYUNDAI	2125.9	2186.1	2156.0	2114.8	2084.7	2043.5	2022.2	1929.0	49.7	Bullish
HINDZINC	442.1	448.0	445.1	442.8	439.9	437.6	440.3	478.6	51.1	Bearish
ICICIBANK	1425.8	1436.9	1431.4	1423.3	1417.8	1409.7	1421.7	1431.9	71.8	Bearish
ICICIGI	2010.8	2038.6	2024.7	2003.3	1989.4	1968.0	1973.7	1932.9	66.4	Bullish
IDEA	7.1	7.5	7.3	7.1	6.9	6.6	6.7	6.8	32.6	Bearish
IDFCFIRSTB	72.1	73.0	72.5	72.1	71.6	71.1	71.0	70.0	50.1	Bullish
IGL	209.1	211.9	210.5	208.9	207.6	206.0	205.9	207.9	37.4	Bearish
INDHOTEL	781.9	795.8	788.9	779.9	773.0	764.0	763.8	764.8	44.8	Bearish
INDUSINDBK	829.8	843.0	836.4	832.2	825.6	821.4	835.9	826.0	51.6	Bullish
INDIANB	620.7	635.4	628.0	623.3	616.0	611.3	618.4	626.8	49.1	Bearish
INDIGO	5639.0	5757.7	5698.3	5630.7	5571.3	5503.7	5474.7	5437.5	47.6	Bullish
INDUSTOWER	415.5	422.8	419.1	415.6	411.9	408.4	405.3	392.0	51.5	Bullish
INFY	1614.9	1641.4	1628.2	1606.6	1593.4	1571.8	1604.4	1592.2	68.0	Bullish
NAUKRI	1509.6	1547.1	1528.3	1515.7	1496.9	1484.3	1494.3	1475.8	61.4	Bullish
IOC	142.0	144.9	143.4	142.6	141.1	140.2	140.4	141.6	60.6	Bearish
ICICIPRULI	634.7	645.3	640.0	635.1	629.8	624.9	630.9	639.9	60.4	Bearish
IRB	49.8	50.5	50.1	49.5	49.2	48.5	49.0	50.5	45.9	Bearish
IRCTC	767.6	775.7	771.6	768.6	764.5	761.5	758.2	769.9	44.9	Bearish
IREDA	171.6	176.3	173.9	170.3	167.9	164.3	165.4	172.0	33.9	Bearish
IRFC	139.6	142.5	141.0	139.9	138.4	137.2	136.3	140.5	26.5	Bearish
ITC	416.4	419.6	418.0	416.5	414.9	413.5	415.8	418.6	70.2	Bearish
JIOFIN	303.3	306.4	304.8	303.4	301.9	300.5	295.1	293.4	39.1	Bullish

NSE 200 SUPPORT & RESISTANCE

SYMBOL	CLOSE	R2	R1	PIVOT	S1	S2	5 DMA	20 DMA	% Delivery	Trend
JINDALSTEL	919.9	944.6	932.3	923.4	911.1	902.2	908.3	934.3	60.4	Bearish
JSWSTEEL	1024.5	1039.9	1032.2	1020.1	1012.4	1000.3	1006.0	995.8	62.0	Bullish
JSWENERGY	507.7	515.5	511.6	509.2	505.3	502.8	498.6	508.3	34.0	Bearish
JUBLFOOD	713.0	732.9	723.0	708.3	698.3	683.6	696.2	683.6	36.0	Bullish
KALYANKJIL	540.4	556.3	548.3	534.9	526.9	513.5	521.2	537.3	21.5	Bearish
CUMMINSIND	3318.9	3371.3	3345.1	3311.8	3285.6	3252.3	3280.1	3313.2	54.9	Bearish
KOTAKBANK	2198.3	2236.9	2217.6	2204.3	2185.0	2171.7	2184.4	2121.2	67.8	Bullish
KPITTECH	1295.4	1324.5	1309.9	1297.5	1282.9	1270.5	1355.9	1356.0	37.6	Bearish
LICHSGFIN	610.1	618.9	614.5	609.5	605.1	600.2	596.1	603.8	51.3	Bearish
LICI	951.1	959.5	955.3	949.7	945.5	939.9	940.2	948.7	47.2	Bearish
LODHA	1456.6	1515.0	1485.8	1466.5	1437.3	1418.0	1461.8	1460.5	57.4	Bearish
LUPIN	1935.3	1966.8	1951.0	1937.3	1921.5	1907.8	1934.6	1970.6	54.8	Bearish
LT	3619.8	3656.7	3638.2	3623.6	3605.1	3590.5	3618.3	3637.9	55.1	Bearish
LTF	201.5	206.2	203.9	201.8	199.4	197.4	194.5	186.7	32.4	Bullish
LTIM	5436.0	5537.3	5486.7	5413.8	5363.2	5290.3	5368.9	5300.5	46.2	Bullish
MANKIND	2308.8	2358.4	2333.6	2315.1	2290.3	2271.8	2306.2	2362.5	60.6	Bearish
MFSL	1627.8	1645.1	1636.4	1621.3	1612.6	1597.5	1603.5	1546.8	73.2	Bullish
MAXHEALTH	1239.0	1276.9	1257.9	1224.0	1205.0	1171.1	1200.9	1183.2	62.4	Bullish
MAZADOCK	3192.7	3360.9	3276.8	3223.9	3139.8	3086.9	3259.3	3340.9	26.8	Bearish
M&M	3215.5	3265.5	3240.5	3200.5	3175.5	3135.5	3156.0	3068.6	60.3	Bullish
M&MFIN	266.4	271.2	268.8	267.4	265.0	263.6	264.0	268.4	44.4	Bearish
MOTILALOFS	869.0	881.7	875.4	866.9	860.5	852.0	841.5	835.5	47.8	Bullish
MOTHERSON	153.4	157.0	155.2	153.3	151.4	149.5	150.2	153.3	48.1	Bearish
MPHASIS	2752.6	2809.9	2781.2	2734.7	2706.0	2659.5	2690.6	2625.0	42.1	Bullish
MARICO	704.9	715.2	710.1	706.8	701.7	698.4	697.2	699.7	73.0	Bearish
MRF	139255.0	141478.3	140366.7	138483.3	137371.7	135488.3	136806.0	137820.0	50.3	Bearish
MARUTI	12767.0	12920.3	12843.7	12730.3	12653.7	12540.3	12734.8	12491.7	62.9	Bullish
MUTHOOTFIN	2574.0	2621.9	2598.0	2566.0	2542.1	2510.1	2597.0	2471.7	42.5	Bullish
NATIONALUM	187.9	192.8	190.4	188.9	186.4	184.9	186.4	185.7	48.0	Bullish
NESTLEIND	2404.4	2458.7	2431.5	2401.8	2374.6	2344.9	2361.7	2388.7	51.9	Bearish
NHPC	85.0	86.8	85.9	85.3	84.4	83.8	83.8	86.4	43.2	Bearish
NMDC	69.0	70.4	69.7	69.3	68.6	68.2	68.3	70.6	49.2	Bearish
NTPC	330.9	335.6	333.2	331.3	328.9	327.0	331.7	333.2	70.5	Bearish
NTPCGREEN	107.2	109.5	108.4	107.6	106.5	105.8	107.4	109.0	45.1	Bearish
NYKAA	204.1	208.7	206.4	202.4	200.2	196.2	199.4	198.0	47.5	Bullish
OBEROIRLTY	1989.0	2025.6	2007.3	1986.7	1968.4	1947.8	1940.8	1874.7	36.7	Bullish
OFSS	9177.5	9401.8	9289.7	9226.8	9114.7	9051.8	9243.4	9108.8	37.1	Bullish
OIL	441.1	454.3	447.7	443.2	436.6	432.0	458.8	449.5	40.7	Bearish
OLAELEC	43.3	44.5	43.9	43.5	42.9	42.6	44.3	47.8	44.4	Bearish
ONGC	241.9	246.7	244.3	242.9	240.5	239.1	248.1	245.4	53.3	Bearish
PAGEIND	48285.0	50815.0	49550.0	47820.0	46555.0	44825.0	45957.0	46069.3	60.6	Bearish
PATANJALI	1633.1	1659.4	1646.3	1630.6	1617.5	1601.8	1629.2	1672.5	67.1	Bearish
PAYTM	894.7	916.4	905.6	898.0	887.2	879.6	883.2	909.1	33.6	Bearish
PRESTIGE	1748.6	1785.9	1767.2	1737.7	1719.0	1689.5	1718.1	1651.3	43.1	Bullish
PHOENIXLTD	1619.3	1651.8	1635.5	1611.8	1595.5	1571.8	1605.0	1600.8	64.5	Bullish
PIIND	4168.0	4289.1	4228.6	4189.2	4128.7	4089.3	4145.1	4002.5	45.5	Bullish
PIDILITIND	3005.9	3068.0	3037.0	3003.2	2972.2	2938.4	2976.7	3031.7	73.2	Bearish
PETRONET	296.4	304.0	300.2	298.1	294.3	292.2	295.7	303.0	52.3	Bearish
PNB	105.9	106.9	106.4	105.8	105.3	104.7	104.2	107.1	47.7	Bearish
POLICYBZR	1839.8	1889.8	1864.8	1847.9	1822.9	1806.0	1875.4	1862.2	59.3	Bearish

NSE 200 SUPPORT & RESISTANCE

SYMBOL	CLOSE	R2	R1	PIVOT	S1	S2	5 DMA	20 DMA	% Delivery	Trend
POLYCAB	6441.0	6576.3	6508.7	6427.3	6359.7	6278.3	6179.3	6067.0	35.4	Bullish
PFC	412.9	421.2	417.1	413.8	409.7	406.4	407.4	411.2	56.1	Bearish
PREMIERENE	1019.0	1058.6	1038.8	1022.9	1003.1	987.2	1011.2	1039.0	32.2	Bearish
PERSISTENT	6108.5	6211.5	6160.0	6125.0	6073.5	6038.5	6055.2	5850.5	52.3	Bullish
POWERGRID	290.5	294.0	292.2	289.4	287.6	284.8	289.2	291.2	71.4	Bearish
RECLTD	398.5	404.7	401.6	399.4	396.3	394.1	394.5	403.8	53.6	Bearish
RELIANCE	1467.3	1478.6	1473.0	1466.7	1461.1	1454.8	1454.9	1437.3	64.6	Bullish
RVNL	399.4	408.0	403.7	400.6	396.3	393.3	392.3	409.9	28.4	Bearish
SAIL	128.3	132.9	130.6	129.3	127.0	125.8	127.6	130.0	38.3	Bearish
SBICARD	969.8	1007.6	988.7	973.1	954.2	938.6	958.6	967.0	55.7	Bearish
SBILIFE	1842.7	1870.9	1856.8	1840.9	1826.8	1810.9	1820.9	1797.1	69.7	Bullish
SBIN	800.1	807.7	803.9	800.0	796.2	792.3	793.4	802.6	51.2	Bearish
SHRIRAMFIN	675.1	681.7	678.4	674.7	671.4	667.7	666.3	665.9	53.6	Bullish
SUPREMEIND	4412.0	4526.9	4469.5	4426.0	4368.6	4325.1	4454.8	4383.0	44.4	Bullish
SIEMENS	3149.1	3235.6	3192.4	3146.7	3103.5	3057.8	3179.9	3279.4	41.1	Bearish
SJVN	100.8	104.2	102.5	100.6	98.9	96.9	97.6	99.4	21.0	Bearish
SOLARINDS	17000.0	17427.3	17213.7	17001.3	16787.7	16575.3	17006.2	16786.9	43.0	Bullish
SONACOMS	480.8	490.4	485.6	481.7	476.9	472.9	481.0	508.6	44.7	Bearish
SHREECEM	29075.0	29621.7	29348.3	28911.7	28638.3	28201.7	28866.0	29434.5	67.9	Bearish
SRF	3080.5	3150.0	3115.3	3070.1	3035.4	2990.2	3042.0	3043.6	63.9	Bearish
SUZLON	64.3	65.4	64.8	64.4	63.9	63.4	63.5	66.1	40.7	Bearish
SUNPHARMA	1669.6	1689.5	1679.6	1668.8	1658.9	1648.1	1661.3	1674.3	64.1	Bearish
SWIGGY	400.0	410.5	405.2	397.3	392.0	384.1	388.8	362.4	32.8	Bullish
TATASTEEL	156.4	157.7	157.0	156.3	155.6	154.9	153.3	155.7	52.5	Bearish
TATACONSUM	1126.5	1149.6	1138.1	1122.3	1110.8	1095.0	1106.4	1103.0	46.6	Bullish
TATATECH	699.9	711.1	705.5	701.9	696.3	692.7	704.3	746.8	48.6	Bearish
TATACOMM	1672.2	1696.9	1684.6	1664.0	1651.7	1631.1	1653.0	1689.8	57.8	Bearish
TCS	3444.8	3481.6	3463.2	3431.6	3413.2	3381.6	3417.7	3437.0	59.2	Bearish
TECHM	1705.0	1736.5	1720.7	1698.3	1682.5	1660.1	1688.8	1632.8	56.9	Bullish
TATAELXSI	6266.5	6351.8	6309.2	6259.8	6217.2	6167.8	6276.9	6431.6	32.4	Bearish
TIINDIA	2856.2	2930.3	2893.3	2859.9	2822.9	2789.5	2871.6	2982.7	55.8	Bearish
TORNTPOWER	1461.9	1496.9	1479.4	1464.5	1447.0	1432.1	1417.3	1410.9	40.6	Bullish
TATAPOWER	403.1	408.6	405.8	402.9	400.2	397.3	393.8	397.7	38.6	Bearish
TRENT	6124.5	6196.2	6160.3	6120.2	6084.3	6044.2	5984.6	5757.7	45.8	Bullish
TORNTPHARM	3226.7	3276.2	3251.5	3208.2	3183.5	3140.2	3180.9	3190.7	59.4	Bearish
TITAN	3652.2	3737.4	3694.8	3622.4	3579.8	3507.4	3541.7	3512.3	48.3	Bullish
TATAMOTORS	674.5	681.2	677.9	675.7	672.3	670.1	673.6	700.2	53.5	Bearish
TVSMOTOR	2916.8	2972.9	2944.9	2896.9	2868.9	2820.9	2824.9	2776.9	53.9	Bullish
UNIONBANK	144.3	148.6	146.4	145.2	143.0	141.8	143.5	148.2	47.6	Bearish
UNITDSPR	1454.9	1480.9	1467.9	1448.7	1435.7	1416.5	1447.6	1513.2	73.9	Bearish
UPL	650.7	660.1	655.4	649.6	644.9	639.1	639.7	638.4	59.0	Bullish
ULTRACEMCO	11733.0	11849.7	11791.3	11712.7	11654.3	11575.7	11527.8	11337.0	55.9	Bullish
VBL	460.3	468.7	464.5	461.6	457.4	454.5	458.6	470.4	63.3	Bearish
VEDL	442.0	451.6	446.8	443.1	438.3	434.7	444.8	449.4	55.3	Bearish
VMM	133.5	139.9	136.7	134.6	131.4	129.3	130.3	127.5	25.9	Bullish
VOLTAS	1311.0	1326.7	1318.9	1309.0	1301.2	1291.3	1293.3	1279.8	52.9	Bullish
WAAREEENER	2942.1	3152.0	3047.1	2990.0	2885.1	2828.0	2900.4	2871.8	24.3	Bullish
WIPRO	269.4	272.5	271.0	268.4	266.9	264.3	265.9	257.0	41.4	Bullish
YESBANK	20.2	20.5	20.4	20.2	20.0	19.9	19.8	20.6	45.0	Bearish
ZYDUSLIFE	974.8	983.8	979.3	972.8	968.3	961.8	959.7	956.7	59.1	Bullish

Disclosure & Disclaimer :

HDFC Securities Limited (HSL) is a SEBI Registered Research Analyst having registration no. INH000002475.

This report has been prepared by HDFC Securities Ltd and is solely for information of the recipient only. The report must not be used as a singular basis of any investment decision. The views herein are of a general nature and do not consider the risk appetite or the particular circumstances of an individual investor; readers are requested to take professional advice before investing. "This report may have been refined using AI tools to enhance clarity and readability."

Nothing in this document should be construed as investment advice. Each recipient of this document should make such investigations as they deem necessary to arrive at an independent evaluation of an investment in securities of the companies referred to in this document (including merits and risks) and should consult their own advisors to determine merits and risks of such investment. The information and opinions contained herein have been compiled or arrived at, based upon information obtained in good faith from sources believed to be reliable. Such information has not been independently verified and no guaranty, representation of warranty, express or implied, is made as to its accuracy, completeness or correctness. All such information and opinions are subject to change without notice. Descriptions of any company or companies or their securities mentioned herein are not intended to be complete. HSL is not obliged to update this report for such changes. HSL has the right to make changes and modifications at any time.

This report is not directed to, or intended for display, downloading, printing, reproducing or for distribution to or use by, any person or entity who is a citizen or resident or located in any locality, state, country or other jurisdiction where such distribution, publication, reproduction, availability or use would be contrary to law or regulation or what would subject HSL or its affiliates to any registration or licensing requirement within such jurisdiction.

If this report is inadvertently sent or has reached any person in such country, especially, United States of America, the same should be ignored and brought to the attention of the sender. This document may not be reproduced, distributed or published in whole or in part, directly or indirectly, for any purposes or in any manner.

Foreign currencies denominated securities, wherever mentioned, are subject to exchange rate fluctuations, which could have an adverse effect on their value or price, or the income derived from them. In addition, investors in securities such as ADRs, the values of which are influenced by foreign currencies effectively assume currency risk. It should not be considered to be taken as an offer to

sell or a solicitation to buy any security.

This document is not, and should not, be construed as an offer or solicitation of an offer, to buy or sell any securities or other financial instruments. This report should not be construed as an invitation or solicitation to do business with HSL. HSL may from time to time solicit from, or perform broking, or other services for, any company mentioned in this mail and/or its attachments.

HSL and its affiliated company(ies), their directors and employees may; (a) from time to time, have a long or short position in, and buy or sell the securities of the company(ies) mentioned herein or (b) be engaged in any other transaction involving such securities and earn brokerage or other compensation or act as a market maker in the financial instruments of the company(ies) discussed herein or act as an advisor or lender/borrower to such company(ies) or may have any other potential conflict of interests with respect to any recommendation and other related information and opinions.

HSL, its directors, analysts or employees do not take any responsibility, financial or otherwise, of the losses or the damages sustained due to the investments made or any action taken on basis of this report, including but not restricted to, fluctuation in the prices of shares and bonds, changes in the currency rates, diminution in the NAVs, reduction in the dividend or income, etc.

HSL and other group companies, its directors, associates, employees may have various positions in any of the stocks, securities and financial instruments dealt in the report, or may make sell or purchase or other deals in these securities from time to time or may deal in other securities of the companies / organizations described in this report. As regards the associates of HSL please refer the website.

HSL or its associates might have managed or co-managed public offering of securities for the subject company or might have been mandated by the subject company for any other assignment in the past twelve months.

Please note that HDFC Securities has a proprietary trading desk. This desk maintains an arm's length distance with the Research team and all its activities are segregated from Research activities. The proprietary desk operates independently, potentially leading to investment decisions that may deviate from research views.

HSL or its associates might have received any compensation from the companies mentioned in the report during the period preceding twelve months from the date of this report for services in respect of managing or co-managing public offerings, corporate finance, investment banking or merchant banking, brokerage services or other advisory service in a merger or specific transaction in the normal course of business.

HSL or its analysts did not receive any compensation or other benefits from the companies mentioned in the report or third party in connection with preparation of the research report. Accordingly, neither HSL nor Research Analysts have any material conflict of interest at the time of publication of this report. Compensation of our Research Analysts is not based on any specific merchant banking, investment banking or brokerage service transactions. HSL may have issued other reports that are inconsistent with and reach different conclusion from the information presented in this report.

Research entity has not been engaged in market making activity for the subject company. Research analyst has not served as an officer, director or employee of the subject company. We have not received any compensation/benefits from the subject company or third party in connection with the Research Report.

HDFC securities Limited, I Think Techno Campus, Building - B, "Alpha", Office Floor 8, Near Kanjurmarg Station, Opp. Crompton Greaves, Kanjurmarg (East), Mumbai 400 042 Phone: (022) 3075 3400 Fax: (022) 2496 5066

Compliance Officer: Murli V Karkera Email: complianceofficer@hdfcsec.com Phone: (022) 3045 3600

For grievance redressal contact Customer Care Team Email: customercare@hdfcsec.com Phone: (022) 3901 9400

HDFC Securities Limited, SEBI Reg. No.: NSE, BSE, MSEI, MCX: INZ000186937; AMFI Reg. No. ARN: 13549; PFRDA Reg. No. POP: 11092018; IRDA Corporate Agent License No.: CA0062; SEBI Research Analyst Reg. No.: INH000002475; SEBI Investment Adviser Reg. No.: INA000011538; CIN - U67120MH2000PLC152193

Investment in securities market are subject to market risks. Read all the related documents carefully before investing.

Mutual Funds Investments are subject to market risk. Please read the offer and scheme related documents carefully before investing.

Registration granted by SEBI, membership of BASL (in case of IAs) and certification from NISM in no way guarantee performance of the intermediary or provide any assurance of returns to investors.